

# THE COMPLETE - ALL IN ONE - STATEMENT MAIL PROCESSING SYSTEM

MailPRINTER



**CASS CERTIFY** ❖ **CONSOLIDATE**  
**PRESORT** ❖ **BARCODE** ❖ **ZIP+4**  
**PRINT** ❖ **FOLD** ❖ **INSERT** ❖ **SEAL**

**Up to 1000 envelopes per hour - with one printer, one person and one software package!**

The award winning PFE Mailprinter is a powerful new machine that combines a dedicated folder inserter with an 18 page per minute laser printer. With the PFE Mailprinter and our Microsoft Access based Mailprinter Utilities software a business can dramatically increase mail room efficiencies not only in saved labor but also postage savings. Our system can consolidate statements delivered to a similar address into the fewest envelopes and also get maximum discounts offered by the United States Postal Service by certifying and presorting the addresses. The Mailprinter and the MailPrinter Form & Postal Utilities were designed for companies who routinely process hundreds to thousands of statements (invoices, credits, payroll, etc.) a week and need "a better way of doing it".

## Forms Processing

**Import** - custom import routine to import just about any kind of data (one to many sources at a time).

**Header** - manipulate your statement header data (also allows user defined importing).

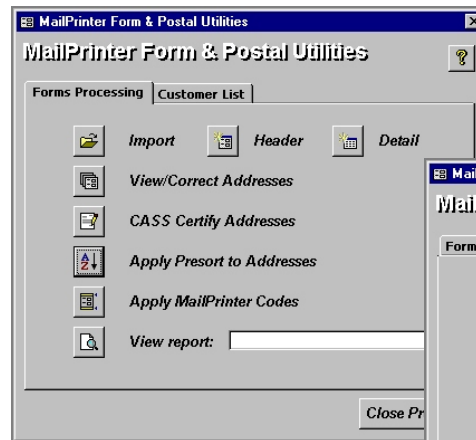
**Detail** - manipulate your statement detail data (also allows user defined importing).

**View/Correct** - view, correct and add zip+4 to any address in the United States.

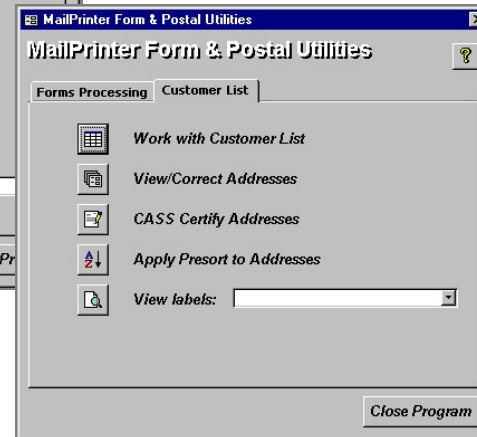
**CASS** - certify the address list, assign carrier routes/lot numbers and print USPS form 3553.

**Presort** - for larger mailings, it sorts your list for best postal rates, generates barcodes and endorsement lines and prints required postal reports and labels.

**Codes** - applies MailPrinter codes to consolidate common statements into fewest envelopes and properly apply page breaks to print - fold - insert - seal.



**View report** - print previews the selected report/statement (custom and user definable with Access report writer). Print a single or a range of pages at any time while previewing.



## Customer List

**Customer** - maintain a customer list (separate from the batch in Forms Processing). It can be used with custom/user defined reports and labels.

**View/Correct, CASS and Presort** - similar to tools defined in Forms Processing.

**View Labels** - print previews the selected label set (custom and user definable with Access report writer).

software

A PC Company, llc  
PO Box 3267, Seattle, WA 98032  
P (206) 592-8368 F (206) 592-0149  
www.apccompany.com

Windows®, Access® - Microsoft Corporation

hardware

PCA Mail & Office Equipment  
10019 Aurora Ave North, Seattle, WA 98133  
P (206) 526-2470 F (206) 528-1923  
www.pcamail.com

Mailprinter® - PFE, International Ltd.